

Digital Visual Acuity Chart System VLC-1900(P) / VLC-2400(P) (New System)

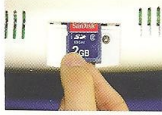
» DISTINGUISHED FEATURES

Window CE Embedded Type Visual Acuity System

-Window CE Embedded type of VLC chart system is more stable than computer based system and needs not additional accessories

-VLC chart system needs not cooling fan as it generates less heat while in operation

- Booting Time: Less than 25 seconds



Special Charts & Various Precise Examination

-VLC chart system helps various and precise exam including Binocular Balance, Aniseikonia, Streopsis, Binocular Fusion, Suppression, Strabismus, Phoria, Color Blindness and Amsler Grid Test with more than 100 charts



Wide Viewing Angle & Clear Chart

-VLC chart system adopts high resolution 19-inch (1280 x 1024) & 24-inch (1920 x 1080) reliable industrial LCD panel with wide viewing angle which provides clear chart and removes the image distortion as well

User friendly function for test distance adjustment

-Viewing distance can be adjusted in accordance to the space of test room

- Viewing Distance is selectable by 0.25M or 0.5M step within 1.5M (Min) ~ 8.0M (Max)



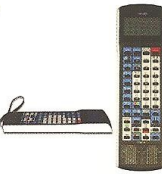
Networking Function

-VLC chart system communicates with compatible automatic phoropters

Wired / Wireless Remote Control with LCD Window

-VLC chart system support both wired / wireless remote control

-High brightness of LCD panel enhances user convenience at dark eye exam circumstances



-Remote control needs not replacement of Battery according to the adoption of rechargeable Lithium-Ion Polymer internal battery

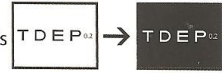
SPECIFICATIONS

Model	VLC - 1900(P)	VLC - 2400(P)
LCD Type	19 inch (SXGA) TFT LCD	24 inch WUXGA TFT LCD
Resolution	1208 X 1024 pixels	1920 X 1080 pixels
Chart window size	(H) 300 X (W) 375mm	(H) 298.89 X (W) 531.36 mm
Brightness	80 ~ 320cd/M (5 - Level variable)	Max 300 cd/m ²
Chart Available	"Landolt, Snellen, English, Arabic, Numeral, Color Blindness, Special Charts, Image and ect."	
Selectable Distance	1.5 ~ 8M (0.25M step)	
Memory Type	SD Card	IDE type Flash Disk Module 4G
Power Supply	DC 12V / 5A	DC 12V / 6.66A
Power Consumption	40W	Less than 80W
Comctn	Wireless IRDA Communication	
	Wired RS232 Communication	
Dimension / Weight	(W) 436 X (H) 362 X (D) 59.55mm / 5.5Kg	(W) 621 X (H) 428 X (D) 76mm / 12Kg
Remote Control	(W) 69.5 X (H) 235.5 X (D) 26mm / 200g / Rechargeable Battery	
Data Interface	USB	USB, RS-232
Standard Accessory	Wall Mount Bracket, Desk-top Stand	Wall Mount Bracket
Optional Accessory	Poll type Floor Stand, Red/Green Glasses, Pola Glasses	

User friendly Function

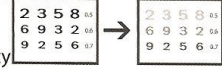
Black / White Reverse

-Black / White reverse function helps Cataract and Lasik patients recognize charts easily



Contrast Sensitivity Adjustment

-VLC chart system helps examiner test with Cataract patients using contrast sensitivity adjustment



-They enable the examiner adjust to 10 steps.

R / G Filter Adjustment Function

-VLC chart system provides 32 steps of R / G filter density that can be used in accordance with test circumstances



-All of Red/Green color charts can be reversed

ETDRS Adjustment Function

-Position of opto-types of ETDRS-1 and ETDRS-2 can be changed by pushing a button on remote control



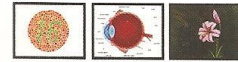
Random Function

-VLC chart system provides various charts with differently order opto-types with Number, Alphabetic letters, Landolt, Snellen opto-types in order to protect the memorizing the order of opto-types by patients



SLIDE SHOW Function

-VLC chart system can store 18 custom images in SD card and displays the images while the system is in power saving mode. And the images change in 5 or 10 seconds



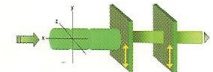
-6 kinds of eye movement test charts during Slide mode.

-4 kinds of Amsler Grid for Macular Degeneration.

-Animation for making a child concentrated during test.

Chart Selection Function

-An examiner can select one of both Non-polar and Polar chart.



Best Polarization Performance

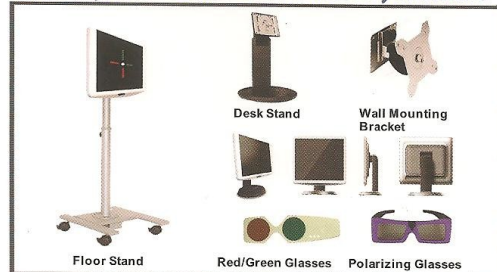
-VLC-1900 P & VLC-2400 P

-Polarization of 19-inch & 24-inch full screen

-Optical polarization glass panel

-Precise eye exam available using special charts

Various System Placements and Accessory selectable



View-M Technology Co., Ltd.

#3F, Octo Building 1000-1, Doksan-Dong Geumcheon-Gu Seoul 153-010, Korea

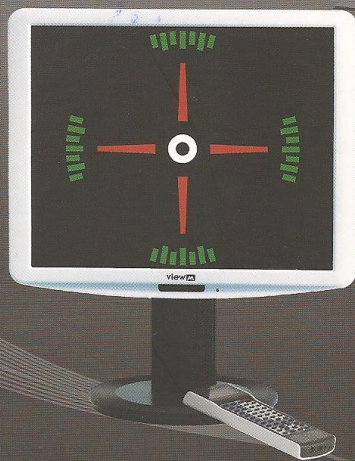
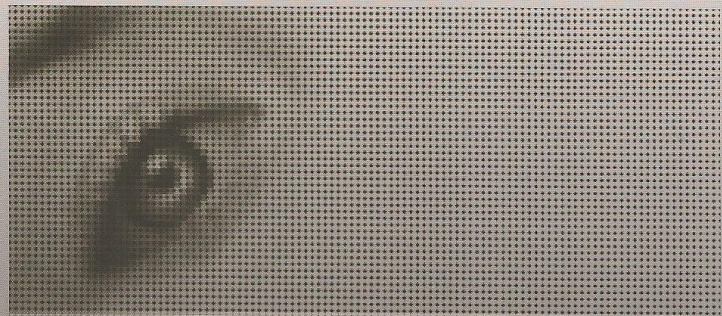
Tel : +82 70 7730 2300 Fax: +82 2 866 2399

E-mail: paullee@viewmtechnology.com

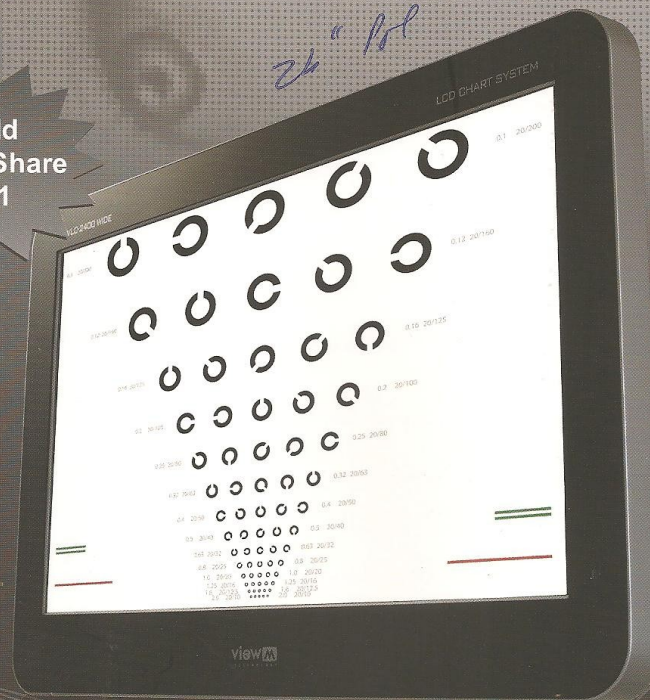
Web-page: www.viewmtechnology.com

Digital Visual Acuity Chart System

VLC - 1900(P) / VLC - 2400(P) (New System)



World
Market Share
No. 1



- New Standard of Visual Acuity Test
- Space-free Chart System
- No more Consumables needed
- Various Charts Support
- Image Slide-Show Customizable
- Stabilized All-in-One System Integration Technology
- User Friendly Function Design

www.viewmtechnology.com



view 
TECHNOLOGY